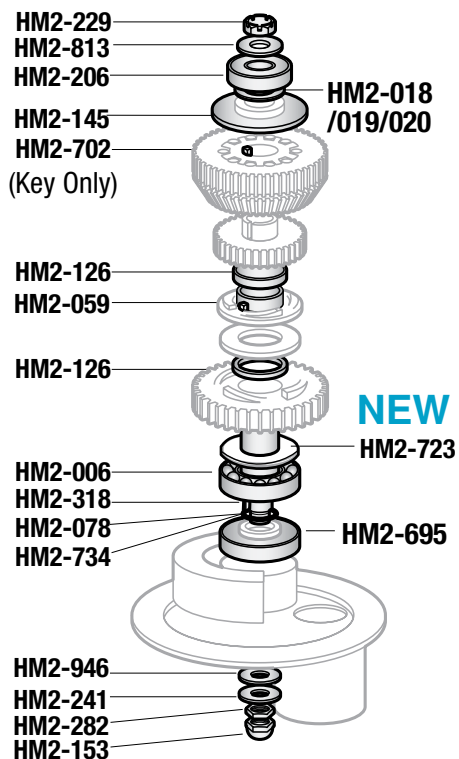


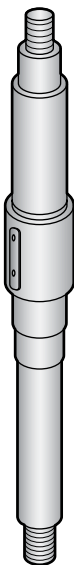
PARTS FOR HOBART MIXERS

Models A120 and A200

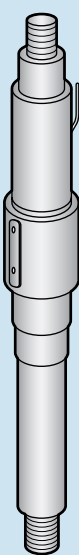
Transmission Unit



HM2-750 O/S



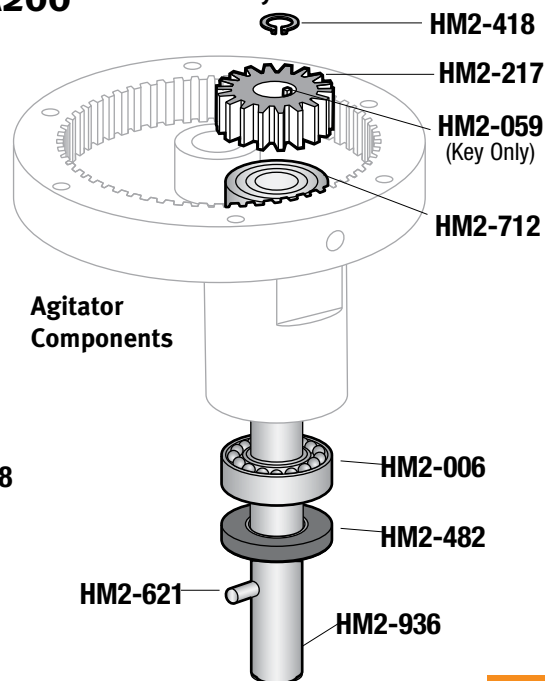
HM2-551 ASSEMBLY



HM2-318



Planetary Unit



ALFA #	HOBART#	DESCRIPTION (O/S = OLD STYLE N/S = NEW STYLE)	FITS MODELS	
			A120	A200
HM2-006	BB-020-6	Planetary Bearing	X	X
HM2-018	WS-010-18	Bearing Shim Washer (.002")	X	X
HM2-019	WS-010-19	Bearing Shim Washer (.003")	X	X
HM2-020	WS-010-20	Bearing Shim Washer (.010")	X	X
HM2-059	12430-59	Upper Clutch Sleeve Key	X	X
HM2-078	67500-78	"O" Ring (Pkg./5)		X
HM2-126	12695	Bronze Clutch Gear Bearing	X	X
HM2-145	107145	Planetary Shaft Spacer	X	X
HM2-153	24715-3	Acorn Nut 1/2"-20	X	X
HM2-206	BB-20-18	Ball Bearing	X	X
HM2-217	00-015217	Pinion Beater Gear (19T)	X	X
HM2-229	NS-32-29	Stop Nut 1/2"-20 Flex Lock	X	X
HM2-241	WS-24-1	Retaining Washer (Pkg./10)		X
HM2-282	10928-2	Special Nut	X	X
HM2-318	12430-17	Key (Lower)	X	X
HM2-418	RR-004-18	Retaining Ring	X	X
HM2-482	23482	Oil Seal		X
HM2-551	24551	Center Planetary Shaft Assembly Unit (Includes HM2-750 plus Diving Key Control, Arm, Spring, Rivet and Special Feather Key) O/S		X
HM2-621	65062-1	Agitator Shaft Pin		X
HM2-695	114695	Oil Seal	X	X
HM2-702	109070-2	Key (Middle)	X	X
HM2-712	BB-17-12	Bearing		X
NEW HM2-723	12723	Lower Spacer	X	X
HM2-734	124734	Shaft - Planetary (N/S) with 2 Keys	X	X
HM2-750	12750	Shaft - Planetary (O/S with Grooves)		X
HM2-813	WS-008-13	Plain Washer (Pkg./10)	X	X
HM2-936	113936	Sub-Assembly - Agitator Shaft		X
HM2-946	124946	Fiber Washer (Pkg./10)	X	X

The above parts are sold by Alfa International as replacement parts for Hobart Mixers. Alfa is not affiliated with Hobart.

MIXERS